

Diesel Engine Timing and Injection Pump Setting & Locking Set



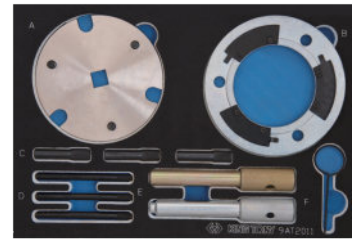
9AT2011E

- The set includes sprocket retaining plate, flywheel & tensioner locking pins
- Suitable for chain drive diesel engine of Ford
- Use to install/remove injection pump & set/lock engine timing



1473 1 / 10

MODEL:	Diesel 2.0 / 2.2 / 2.4 TDdi / TDci DURATORQ(CHAIN)
ENGINE CODE:	2.0Ddi ABFA, D3FA, F3FA 2.0 TDdi D5BA, D6BA 2.0 TDci FMBA, FMBB 2.2 TDci QJBA~D 2.4 Ddi D2FA, F4FA 2.4 TDci FXFA, H9FA, JXFA, PHFA



- CONTENTS :
- A – access Cover Removal Plate
 - B – sprocket Retaining Plate
 - C – location Pins (3 PC.)
 - D – locking Pins (3 PC.)
 - E – flywheel Locking Pins (2 PC.)
 - F – tensioner Locking Pin

FORD

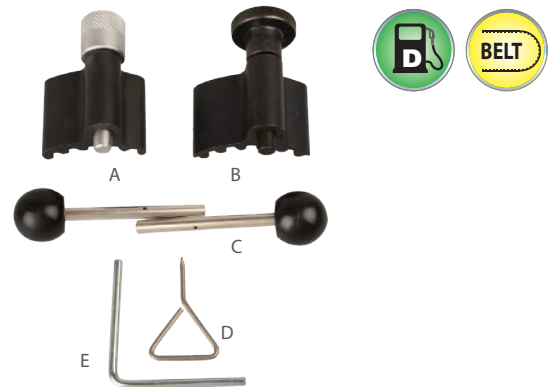
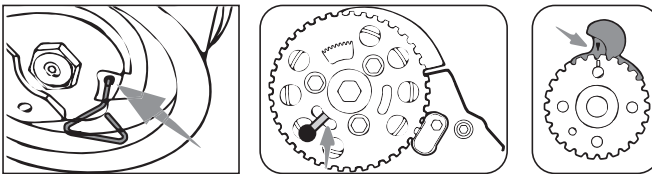
Diesel Engine Setting/Locking Tool (Belt Drive)

9AT2-C01

- The set includes crankshaft (oval / round), camshaft and tensioner locking pins
- Suitable for most of general VAG 1.4 / 1.9 / 2.0 TDi PD DOHC engines
- Also for Ford Galaxy models engine

408 10 / 40

MODEL:	Galaxy 1.9
ENGINE CODE:	ASZ / ANU



- CONTENTS :
- A - Crankshaft Locking Tool (Silver / Oval)
 - B - Crankshaft Locking Tool (Black / Round)
 - C - Camshaft Locking Pins (2 pcs)
 - D - Tensioner Pulley Locking Pin
 - E - Auxiliary Belt Tensioner Locking Pin

Petrol Engine Timing Set – Ford 2.0 EcoBoost



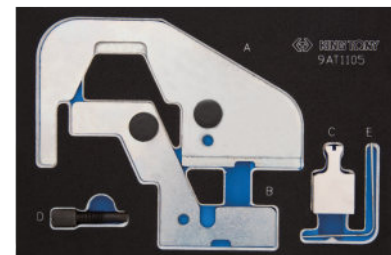
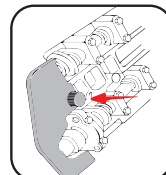
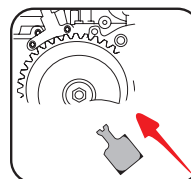
9AT1105E

- The set includes cam & crankshaft alignment tool and tensioner locking pin
- Suitable for Ford fitted with SCTi EcoBoost / Ti-VCT 2.0lt direct injection engines
- Camshaft tool use for vehicles manufactured **May 2011 and after May 2011**



1745 1 / 10

MODEL:	Galaxy(2010-), Mondeo(2010-) S Max(2010-), Focus(2011-)
ENGINE CODE:	Galaxy 2.0 TNWA, TNWB, TPWA Mondeo 2.0 TNBA, TPBA S Max 2.0 TNWA, TNWB, TPWA Focus 2.0 MGDA, XQDA



- CONTENTS :
- A – camshaft alignment plate
 - B – camshaft alignment plate
 - C – crankshaft locking tool
 - D – crankshaft timing pin
 - E – tensioner locking pin