

PSA PEUGEOT CITROËN

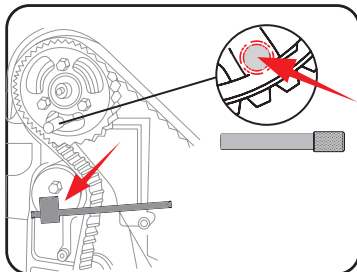
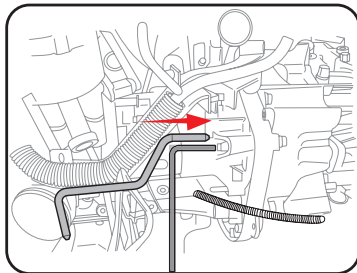
Diesel Engine Timing Set



9AT2026E

- The set includes special flywheel tools and cam/crankshaft timing pin
- Use to replace timing belt engines of:
1.4Hdi / 1.5D / 1.6Hdi / 1.9D / 2.0Hdi / 2.0DHDi 16V / 2.2Hdi / 2.5D Turbo
- Suitable for PSA Peugeot / Citroen engines

3180 1 / 3



CONTENTS :

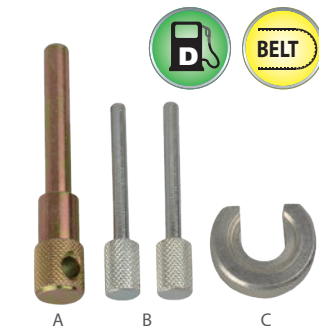
- A - flywheel pulley puller
- B - flywheel locking tool
- C - tensioner tool
- D - M8 x 80mm screw
- E - flywheel locking pin
- F - flywheel locking tool
- G - flywheel locking tool
- H - flywheel timing tool
- I - tensioner tool
- J - timing pin
- K - timing belt retaining tool
- L - tensioner locking pin
- M - special locking tool

PSA PEUGEOT CITROËN

Diesel Engine Setting Tool (Belt Drive)

9AT2-A01

- The set includes flywheel locking pin, TDC timing pin and tensioner retaining tool
- Use for holding engine timing position when replacing timing belt
- Suitable for Fiat, Iveco, Renault, Citroen / Peugeot, Vauxhall / Opel



CONTENTS :

- A - TDC timing pin
- B - flywheel locking pin (2pc)
- C - tensioner retaining tool

112 12 / 120

MODEL: 2.8D/Tdi/Hdi
Relay / Jumper (01-06)
Boxer (00-06)

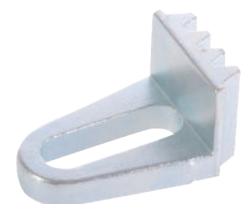
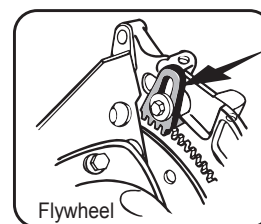
ENGINE: 8140.43
8140.43S
8140.63



Petrol & Diesel Engine Flywheel Holding & Locking Tool

9AT3-E02

- Used to remove the crankshaft pulley when replacing the timing belt
- The pulley retaining bolt is fitted with high torque and the flywheel must be securely locked during installation / removal
- Jamming tools into the teeth of the flywheel will cause serious damage to both teeth and housing



64 25 / 100

MODEL: Petrol 1.0 to 2.0 TU / XU (Belt)
XU 1.6 to 2.0
Diesel 1.50 to 2 .50 TUD / XUD (Belt)
XU1.6 to 2.0
XD1.8D to 1.9D

