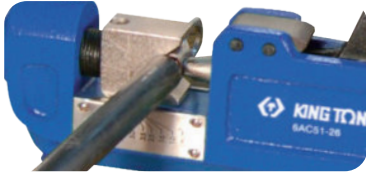





# Heavy Duty Crimping Tool

## 6AC51-26

- For cable lugs from 10mm<sup>2</sup>-150mm<sup>2</sup> with non-ratchet screw adjustment

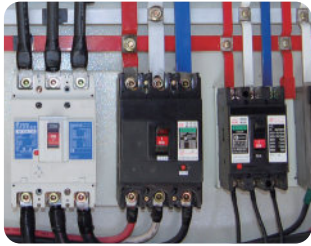


### Crimping capacity

KT NO.	Overall length mm	 kg	 / 	Crimping capacity										
				AWG	8	6	4	2	1/0	2/0	3/0	4/0	300MCM	
6AC51-26	665	3.9	1 / 5	JIS(mm <sup>2</sup> )	8	14	22	38	60	70	80	100	150	
				DIN(mm <sup>2</sup> )	10	16	25	35	50	70	95	120	150	

## 6AC52-12

- Ratchet designed. For non-insulated terminals



KT NO.	Overall length		 kg	 / 
	inch	mm		
6AC52-12	12	300	520	6 / 24

AWG	16	14	10	8	6
JIS mm <sup>2</sup>	1.25	2	5.5	8	14
DIN mm <sup>2</sup>	1.5	2.5	6	10	16
Item No.	6AC52-12	•	•	•	•

