

Impact Wrench

33851 / 33852

33911 / 33912

33921 / 33922

- Nickel chrome molybdenum square drive
- Variable speed trigger
- Muffled on handle exhaust



New Twin Hammer



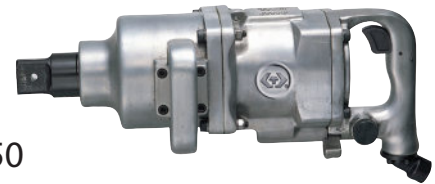
33851-250



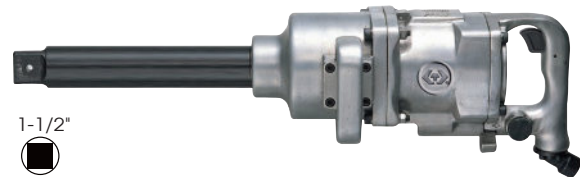
33852-250



33911-250
33921-300



33912-250
33922-300



KT NO.	Square drive Inch mm	Type Std./Long anvil	Std. Bolt Size Inch mm	Free Speed R.P.M	Max. Torque ft-lb N-m	Overall Length Inch mm	Air Inlet Inch	Air Hose ID	Air Pressure bar psi	Avg. Air Consumption L/min CFM	Sound DBA	Vib M/S2	Net Weight kgs lbs
33851-250	1" 25.40	Std. anvil	1-25/32" M45	3000	2500 3388	17-11/64" 436	1/2" BSPT / NPT	3/4"	6.2 90	411 14.5	101.15	6.30	15.80 34.83 1 / 1
33852-250	1" 25.40	Long anvil	1-25/32" M45	3000	2500 3388	24-7/8" 632	1/2" BSPT / NPT	3/4"	6.2 90	411 14.5	101.91	6.49	18.70 41.23 1 / 1
33911-250	1-1/2" 38.10	Std. anvil	1-25/32" M45	3000	2500 3388	17-53/64" 453	1/2" BSPT / NPT	3/4"	6.2 90	411 14.5	104.13	6.32	15.80 34.83 1 / 1
33912-250	1-1/2" 38.10	Long anvil	1-25/32" M45	3000	2500 3388	23-53/64" 605	1/2" BSPT / NPT	3/4"	6.2 90	411 14.5	103.90	6.53	18.70 41.23 1 / 1
33921-300	1-1/2" 38.10	Std. anvil	2" M50	3000	3000 4065	17-3/4" 451	1/2" BSPT / NPT	3/4"	6.2 90	453 16.0	104.52	8.86	19.70 43.43 1 / 1
33922-300	1-1/2" 38.10	Long anvil	2" M50	3000	3000 4065	25-15/32" 647	1/2" BSPT / NPT	3/4"	6.2 90	453 16.0	104.52	7.12	22.80 50.27 1 / 1