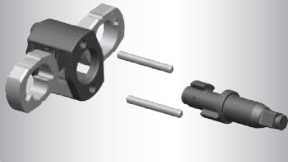


Impact Wrench

33671 / 33672

- Lightweight durable composite housing
- Nickel chrome molybdenum square drive
- Comfortable rubber handle

Twin Hammer



-10% Length

18-19/64"

-45% weight

6.40kg

-10% Length

18-39/64"

-45% weight

6.70kg

33871 / 33872



3/4"

33671-160

3/4"

33672-160

1"

33871-160

1"

33872-160

KT NO.	Square drive inch mm	Type Std./Long anvil	Std. Bolt Size inch mm	Free Speed R.P.M	Max. Torque ft-lb N-m	Overall Length inch mm	Air Inlet inch	Air Hose ID	Air Pressure bar psi	Avg. Air Consumption L/min CFM	Sound DBA	Vib. M/S ²	Net Weight kgs lbs	
33671-160	3/4" 19.05	Std. anvil	1-3/16" M30	5500	1600 2170	12-1/2" 318	1/2" BSPT / NPT	3/4"	6.2 90	241 8.5	105.00	15.40	5.70 12.57	1 / 2
33672-160	3/4" 19.05	Long anvil	1-3/16" M30	5500	1600 2170	18-19/64" 465	1/2" BSPT / NPT	3/4"	6.2 90	241 8.5	106.00	13.80	6.40 14.11	1 / 2
33871-160	1" 25.40	Std. anvil	1-3/16" M30	5500	1600 2170	12-45/64" 323	1/2" BSPT / NPT	3/4"	6.2 90	241 8.5	106.00	13.70	5.80 12.79	1 / 2
33872-160	1" 25.40	Long anvil	1-3/16" M30	5500	1600 2170	18-39/64" 473	1/2" BSPT / NPT	3/4"	6.2 90	241 8.5	104.00	14.98	6.70 14.77	1 / 2